

# AARTI MACHINES



## Aarti Roti Rolling Machine

- The Aarti Roti Rolling Machine is a compact and robust kitchen appliance designed to simplify the process of making Rotis.
- This machine automates the time-consuming and skill-intensive task of rolling dough into perfectly round and evenly thin Rotis, saving both time and effort.
- By incorporating technology into traditional cooking practices, the Aarti Roti Rolling Machine not only enhances efficiency but also ensures consistency in every roti, making it an invaluable tool for both novice cooks and seasoned chefs.
- Its user-friendly design and ability to produce a high volume of Rotis quickly make it an attractive option for busy families and small businesses alike.

Model Number	Application	Use	Running Capacity	Disc/Bowl Size (inch)	Output	Motor
DRM08	Rolling	Domestic Use / Home	1 Hour	Ø 08 (D)	90–100 Roti/Hour	120 Watt
DRMS1	Rolling	Domestic Use / Home	1 Hour	Ø 10 (D)	90–100 Roti/Hour	120 Watt
DK02	Kneading	Domestic Use / Home	24 Hour	Ø 9.5 x 6.5 (B)	2 kg in 5 Min	0.25 HP
DBR10	Rolling	Commercial Use	5 Hour	Ø 10 (D)	90–100 Roti/Hour	120 Watt
PM10	Rolling	Commercial Use	24 Hour	Ø 10 (D)	90–100 Roti/Hour	0.25 HP
RM03	Rolling	Commercial Use	24 Hour	Ø 12 (D)	90–100 Roti/Hour	0.25 HP
DK06	Kneading	Commercial Use	24 Hour	Ø 15 x 9.1 (B)	6 kg in 15 Min	0.5 HP
DK05	Kneading	Commercial Use	24 Hour	Ø 13.3 x 9.5 (B)	5 kg in 15 Min	0.5 HP

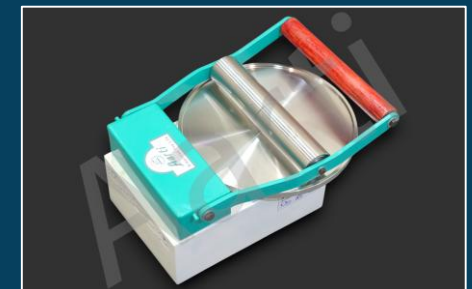
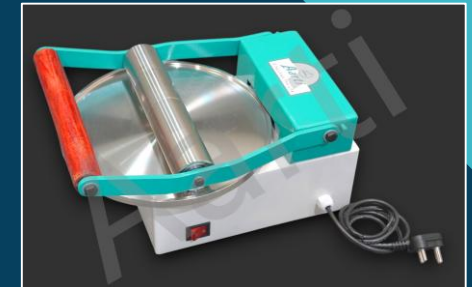
## Rolling Machine : Aarti DRM08

- Designed For Multipurpose Rolling (Roti, Papad, Paratha Etc.)
- Best Suitable For Domestic Use
- Can Be Used In Standing And Sitting Positions
- Makes 90 – 100 Roti Per Hour
- Robust Design: Disc & Roller Made of Stainless Steel & Steel Body
- Compact Size: 12 x 8.5 x 8.5 (L x B x H) Inches
- Light Weight: 11.3 Kg
- Disc Size: Ø8 Inch
- Power Input: Single Phase 220 Volt AC
- Power Consumption: Rs. 1.0 / Hr



## Rolling Machine : Aarti DRMS1

- Designed For Multipurpose Rolling (Roti, Papad, Paratha Etc.)
- Best Suitable For Domestic Use
- Can Be Used In Standing And Sitting Positions
- Makes 90 – 100 Roti Per Hour
- Robust Design: Disc & Roller Made of Stainless Steel & Steel Body
- Compact Size: 14 x 10.5 x 8 (L x B x H) Inches
- Light Weight: 12.8 Kg
- Disc Size: Ø10 Inch
- Power Input: Single Phase 220 Volt AC
- Power Consumption: Rs. 1.0 / Hr



## Rolling Machine : Aarti PM10

- Designed For Multipurpose Rolling (Roti, Papad, Paratha Etc.)
- Best Suitable For Commercial Use
- Can Be Used In Standing And Sitting Positions
- Makes 90 – 100 Roti Per Hour
- Robust Design: Disc & Roller Made of Stainless Steel & Steel Body
- Compact Size: 14 x 12 x 12 (L x B x H) Inches
- Light Weight: 15 Kg
- Disc Size: Ø10 Inch
- Power Input: Single Phase 220 Volt AC
- Power Consumption: Rs. 2.0 /Hr



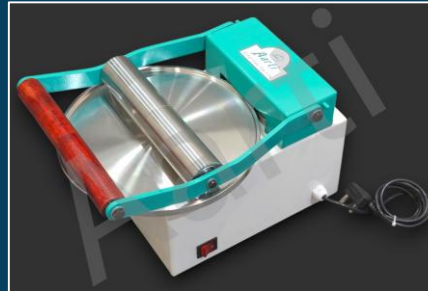
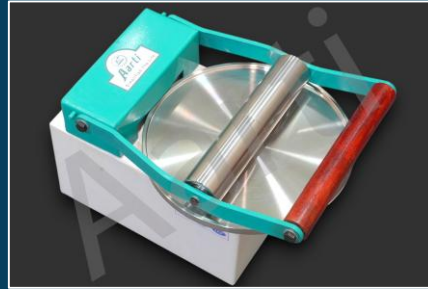
## Rolling Machine : Aarti RM03

- Designed For Multipurpose Rolling (Roti, Papad, Paratha Etc.)
- Best Suitable For Commercial Use
- Can Be Used In Standing And Sitting Positions
- Makes 90 – 100 Roti Per Hour
- Robust Design: Disc & Roller Made of Stainless Steel & Steel Body
- Compact Size: 16 x 12 x 12 (L x B x H) Inches
- Light Weight: 18 Kg
- Disc Size: Ø12 Inch
- Power Input: Single Phase 220 Volt AC
- Power Consumption: Rs. 2.0 /Hr



## Rolling Machine : Aarti DBR10

- Designed For Multipurpose Rolling (Roti, Papad, Paratha Etc.)
- Best Suitable For Commercial Use
- Can Be Used In Standing And Sitting Positions
- Makes 90 – 100 Roti Per Hour
- Robust Design: Disc & Roller Made of Stainless Steel & Steel Body
- Compact Size: 14.5 x 10.5 x 9.6 (L x B x H) Inches
- Light Weight: 15 Kg
- Disc Size: Ø10 Inch
- Power Input: Single Phase 220 Volt AC
- Power Consumption: Rs. 1.0 /Hr



## Kneading Machine: Aarti DK05

- Designed For Dough Kneading
- Best Suitable For Commercial Use
- Uniform Kneading
- Kneads 5 Kg atta in 15 min
- Robust Design: Bowl & Rotor Made of Stainless Steel & Steel Body
- Compact Size: 29 x 17 x 24 (L x B x H) Inches
- Product Weight: 44 Kg
- Easily removes the dough after kneading
- Power Input: Single Phase 220 Volt AC



## Kneading Machine : Aarti DK06

- Designed For Dough Kneading
- Best Suitable For Domestic Use
- Uniform Kneading
- Kneads 6 Kg atta in 15 min
- Robust Design: Bowl & Rotor Made of Stainless Steel & Steel Body
- Compact Size: 28 x 22 x 27 (L x B x H) Inches
- Product Weight: 40 Kg
- Easily removes the dough after kneading
- Power Input: Single Phase 220 Volt AC



## Kneading Machine : Aarti DK02


- Designed For Dough Kneading
- Best Suitable For Domestic Use
- Uniform Kneading
- Kneads 2 Kg atta in 08 min
- Robust Design: All Parts Made of Stainless Steel
- Compact Size: 17 x 14 x 20 (L x B x H) Inches
- Product Weight: 17 Kg
- Easily removes the dough after kneading
- Power Input: Single Phase 220 Volt AC
- Power Consumption: Rs. 2.0 /Hr





Manufactured by

A S Engineering,

 Shop No. 28A, Hari-Om Industrial, Gat No. 90,  
Near Jyotiba Mandir, Jyotibanagar,  
Talawade Road, Talawade, Pune - 411 062.

Contact Us

 salesase15@gmail.com,

 +91-9730389983, +91-8446289983